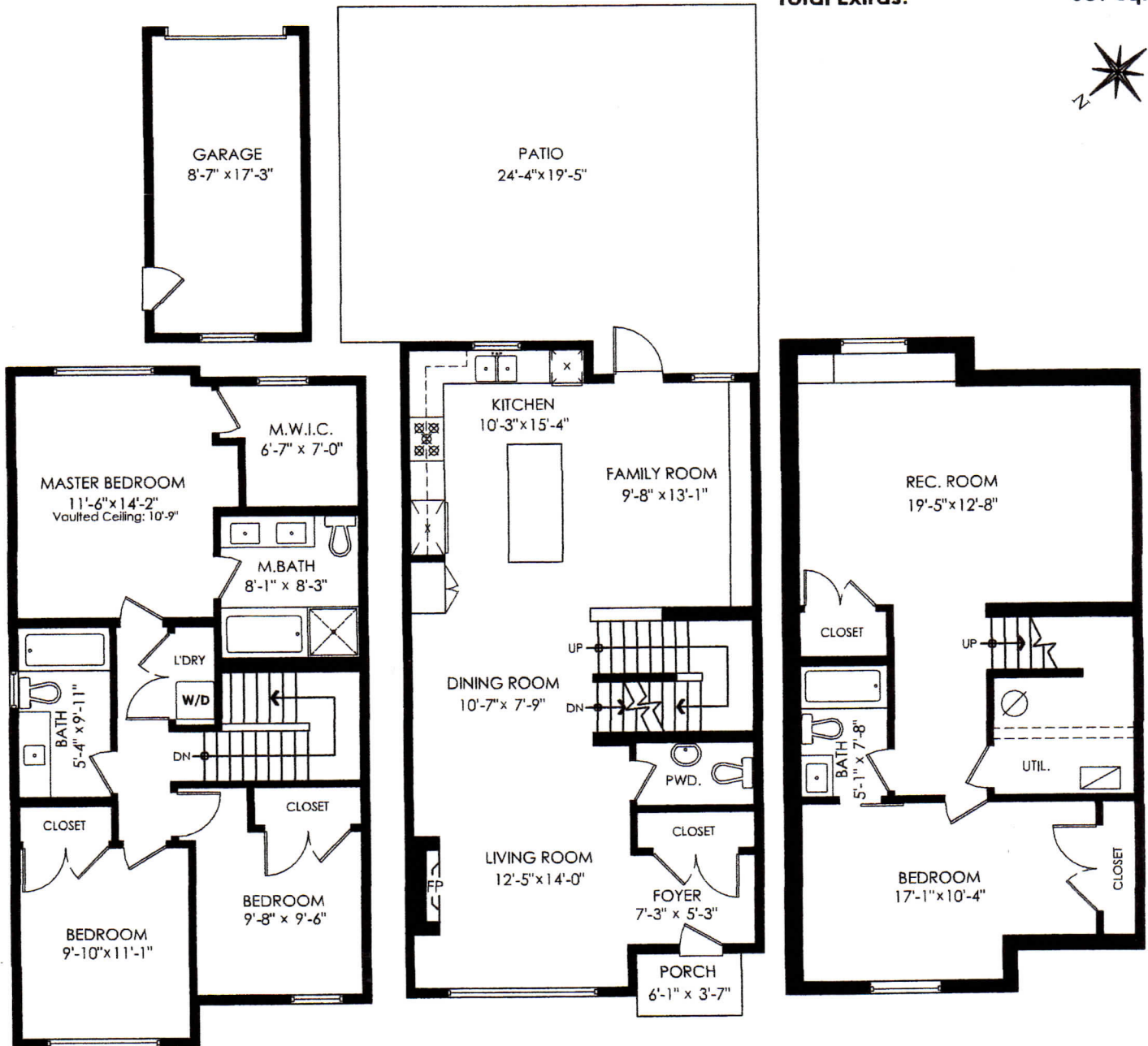


16516 25 Avenue, Surrey

Main Floor:	758 sq.ft.
Upper Floor:	794 sq.ft.
Lower Floor:	758 sq.ft.
Total:	2,310 sq.ft.

Garage:	175 sq.ft.
Patio:	492 sq.ft.
Porch:	22 sq.ft.
Total Extras:	689 sq.ft.



Upper Floor Plan
Floor Area: 794 sq.ft.
Ceiling Height: 8'

Main Floor Plan
Floor Area: 758 sq.ft.
Ceiling Height: 8'-11"

Lower Floor Plan
Floor Area: 758 sq.ft.
Ceiling Height: 8'